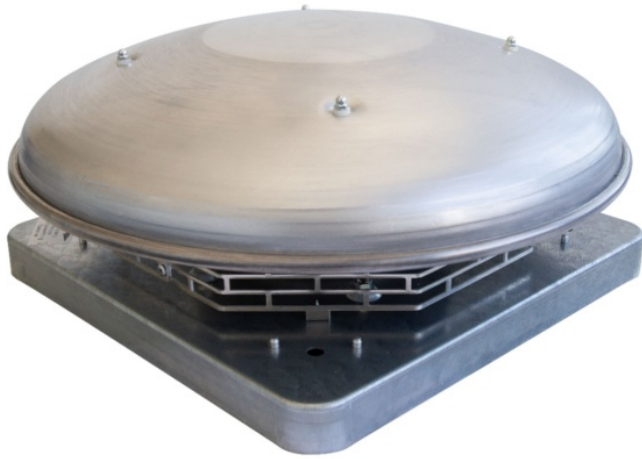


DHS Roof Fans

Centrifugal roof fan with horizontal discharge



- Available with AC motors for 50 and 60Hz
- Extensive range of accessories

[Find more details in our online catalogue](#)

Flexibility

The DHS fans are intended to use for **extract** air with **horizontal discharge**.

The fans are designed to handle high volumes at medium pressure without generating excessive noise.

Reliability

The casing made out of **seawater resistant aluminium** with an inside **galvanised steel frame** is hard-wearing.

The combination of casing and motor construction ensures to minimize the need for maintenance of the fans and allows long **continuous operation**.

Performance

The **sound optimized** impellers together with **high efficient** external rotor motors are designed to ensure high-level performance to **minimize power consumption** and **maximize efficiency**.

Accessories

DHS fans can be selected together with variety types of **accessories** as roof sockets, tilting devices, dampers, etc.

Features

Construction

The **Casing** is made from **sea water resistant aluminium**. **Base frame** manufactured from **galvanised steel** with integrated inlet cone. Integrated bird guard manufactured from powder coated, galvanised steel or sea water resistant aluminium.

Impeller

The DHS fans use **radial** impeller with **backward curved blades**. These are made out of high-performance composite material or aluminum, dynamically **balanced** and paired with corresponding **external rotor** motors.

Motor

DHS fans are delivered with **AC motors**. Motors are suitable for **50Hz** and **60Hz**.

Motor protection

Depending on the type, **AC** motors have an **integrated** thermal protection with manual (electrical) reset, prewired integral **thermocontact TK** or **thermistor PTC** with leads to a **motor protection device**.

Control

AC motors can be controlled by **5-step, stepless** speed regulator, **D/Y** switch or **frequency converter**.

Installation

The DHS fans are for **outside installation**.

Technical parameters

Nominal data

Voltage (nominal)	230	V
Frequency	50	Hz
Phases	1~	
Input power	104	W
Input current	0.46	A
Impeller speed	2,501	rpm
Air flow	max 0.2214	m³/s
Capacitance of capacitor	2.5	µF
Temperature of transported air	max 60	°C
Max temperature of transported air, when speed controlled	60	°C

Protection/Classification

Enclosure class, motor	IP44
Insulation class	F

Data according to ErP

ErP ready	ErP 2018
-----------	----------

Dimensions and weights

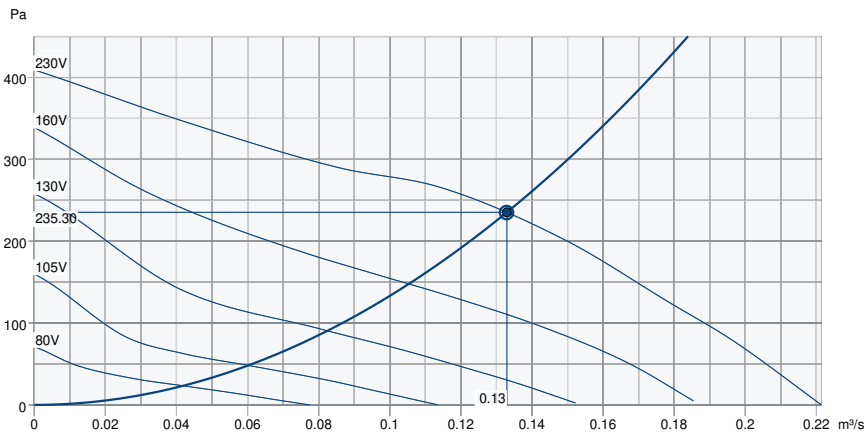
Weight	5.7	kg
--------	-----	----

Others

Motor type	AC
------------	----

Performance

Performance curve



Hydraulic data

Required air flow	0.13 m³/s
Required static pressure	235 Pa
Working air flow	0.13 m³/s
Working static pressure	235 Pa
Air density	1.204 kg/m³
Power	103.2 W
Fan control - RPM	2,511 rpm
Current	0.50 A
SFP	0.776 kW/m³/s
Supply voltage	230 V

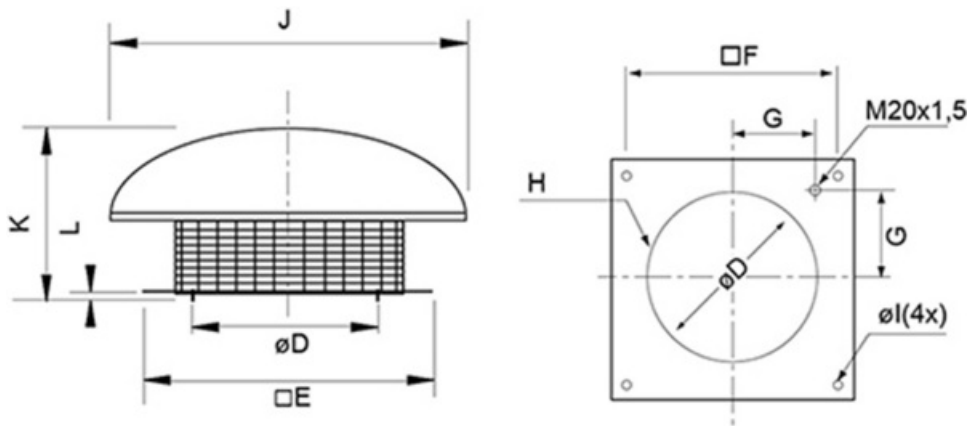
Sound power level		63	125	250	500	1k	2k	4k	8k	Total
Inlet	dB(A)	34	45	55	60	62	63	57	50	67
Outlet	dB(A)	35	47	56	61	63	65	59	51	69

Accessories

Ecodesign

Product	
Trade name	Systemair
Product name	DHS 225EZ sileo roof fan
Ecodesign	
ErP compliance	2018
Unit category	NRVU
Drive	External MSD or VSD
Unit type	UVU
Heat recovery type	None
Temperature ratio (UVU)	Not applicable
qv nom	0.1331 m ³ /s
P nom	0.103 kW
Ps nom	235 Pa
Fan efficiency	30.3 %
External Leakage	0 %
Sound power (LWA)	69 dB(A)

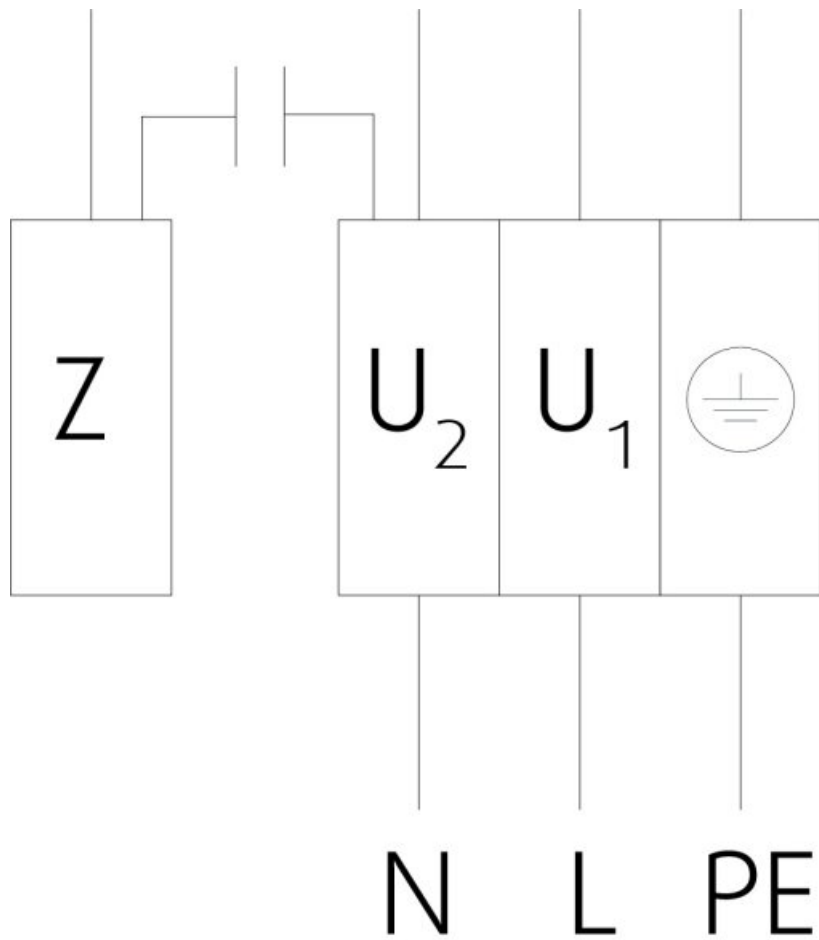
Dimension



* diameter D refers to scREW-hole-circuit H

DHS/DHS sileo	ØD	□E	□F	G	H	Øl	J	K	L
225	213	335	245	105	6xM6	10	Ø417	150	30

Wiring



	assignment
L=U1	blue
N=U2	black
Z	brown
PE	green/yellow

Accessories

- ASK 190/225 inflow box SSD (300902)
- RE 1,5 Speed control (5000)
- REU 1.5 Speed control (5004)
- REV-5POL/05-7,5kW R/Y (33979)
- Frequency converter FRQSE-6A (37419)
- SSS 190 slant. socket silencer (30075)
- FDS 190/225 flat roof socket (9548)
- SSD 190/225 ZM socket sil (95063)
- Frequency converter FRQ5SE-6A (37421)
- REE 1 Speed control (5314)
- REV-3POL/03-7,5kW R/Y (33978)
- SSD 190/225 socket silencer (9560)
- SDS 190/225 slant. roof socket (3783)
- ASF 190/225 inlet flange DVS (9567)
- FDS-L 190/225 flat roof socket (95278)
- VKS 190/225 Back draft damper (9539)

Documents

- MANUAL_ROOF_FANS_EN_001_.PDF
- UKCA DECLARATION OF CONFORMITY_ROOF FANS_EN_002.PDF

Specification

The box blows out horizontal. The box is made out of saltwater- proofed aluminium with grill. The underframe is made up of electroplated, powder- coated steel-plate. Freewheeling radial impeller consists of polyamide PA6 with backward- curved impeller vanes. The actuation is carried out by a maintenance- free, tension- controlled extern rotor motor, which is tension- controlled with a thyristor or transformer. A two- stepped operation with a speed controller is also possible. For protecting the motor thermal contacts with completed lines to a motor protection device are built into the winding. For annealing the engine is designed inside the air flow. Impeller according to VDI 2060, quality category Q6,3 and dynamically weigh heavy in two levels.